

WASH RAG SUPPORT for the PRE-FEASIBILITY, GOVERNMENT REQUIRED STUDY,
VISTA HERMOSA, Santa Lucia Utatlan, Guatemala
Geo reference of the community: 14°46'0.36"N, 91°16'53.68"

Over the past decade Vista Hermosa residents' only water source has deteriorated such that water flows for a few hours a day. The existing system pumps minimal water to only 26 homes and the regional school. Community representatives approached Agua del Pueblo (AdP) for help early in 2021. The Rotary Club of Lake Atitlan (RCLA) had worked with AdP on three previous global and districts grants. After discussions between AdP and RCLA, RCLA asked AdP engineers and social workers to visit the community to begin work on a pre-feasibility study. AdP completed the visit on June 25, 2021. Representatives of the Rotary Club of Lake Atitlan (RoCLA) subsequently returned to Vista Hermosa to interview community members and the water committee. Currently the community has a total of 40 families and a regional school with 34 students.

Background on Vista Hermosa

Vista Hermosa is located 2.5 km from the municipal capital, 23 km from the departmental capital and 150 km from the capital city of Guatemala. Vista Hermosa can be accessed through Pamezabal and through the center of Santa Lucia Utatlán. Corn, Beans, and Flowers are the main sources of income.

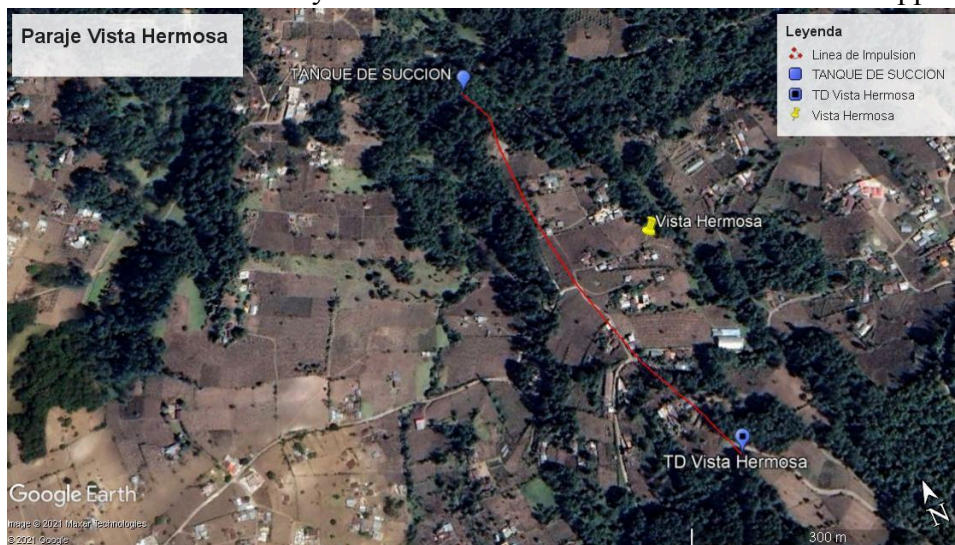
Water and Sanitation

The proposed project would include a new well with a submersible pump to extract water from the underlying aquifer. The distribution network needs to be rehabilitated and expanded to carry the additional water.

The majority of the families have pit latrines. The latrines have been made with the community's own resources. Most of the latrines are in poor condition. In many locations the gray water runs on the ground and onto the roads. The proposed project would include upgrading the sanitation system including installation of "mini-waterwater treatment plants".

Proposed Project

The community has agreed to take the lead on the project and provide all of the unskilled labor. The residents have agreed to provide rights of way for the expanded distribution pipeline. The project would also include individual water meters for each household. The project includes wastewater treatment systems for groups of approximately five homes. The project will also build another wastewater treatment system for the school. Total cost still needed approaches \$60,000.



The key components are the requirements of the local government. We ask WASH-RAG for \$2,000 for a portion of the Government required studies. Local requirements require an estimate of monthly tariffs to determine if the community is economically able to sustain the operation and maintenance. To estimate monthly costs, we need preliminary engineering designs including estimates of Total Dynamic Head at multiple times during a typical day. We need non-GPS, tripod-measured topography to estimate the differences of elevation between the water source, the distribution tank, and the critical taps in Vista Hermosa. GPS does not offer the required sensitivity. We also need to draft and sign a contract with at least 80% of the community. The contract would confirm the town's willingness to pay. Finally we need to obtain authorization and municipal financial support. The \$2,000 will not cover ALL of this work, but WASH RAG support will facilitate the required additional funding.